



HOSPITALITY & ENTERTAINMENT

HOTELS, SPORTS VENUES, RESTAURANTS & BREWERIES

WDG | ARCHITECTS ENGINEERS

Hospitality is about more than smiling faces behind a counter. It is about enhancing the guest experience through a well-designed environment. Whether the user is a traveler, visitor, tourist, business person or even an employee, the design of hospitality is about increasing enjoyment, relaxation, and adaptability of the built environment to comfortably accommodate the guest experience. In addition to the high quality of materials and luxurious finishes one would expect in a hospitality environment, the layout and flow of the back of house is vitally important to the function of a hospitality space.

hotels, sports venues, restaurants & breweries

Since our founding, WDG | Architects Engineers has been providing quality architectural, interior design and engineering services for clients in the hospitality industry. We have extensive experience in the architecture and engineering design of many hotels, sports venues, restaurants, bars, casinos and all of the kitchen, storage, and all of the back of house components and go into these types of buildings and spaces. Our team of professionals regularly works on new construction, renovations, and historic structures throughout the Greater New Orleans area & beyond. We work with owners to plan for growth and to help forecast industry trends and best practices.

We pride ourselves on design for the hospitality environment as one of our cornerstones at WDG. We look forward to helping our clients in their ongoing mission to improve the guest experience into the future and beyond.





HOTEL MONTELEONE

NEW ORLEANS, LA
WDG provided architecture and engineering services for a \$40,000,000 renovation of the Hotel Monteleone in the French Quarter over a four year period.

The mechanical, plumbing, electrical and fire protection and suppression systems were replaced, brought up to current codes, and the latest energy saving technology was employed to optimize facility operation while providing individual room temperature control. Custom energy recovery ventilators were installed to exchange energy between the outside air and exhaust systems while improving pressurization throughout the hotel. The temperature control system was integrated with the hotel reservation system to maximize energy savings while providing optimum comfort to the guests.

WDG's work included renovations of the lobby, ballroom and famed Carousel Bar. Other projects at the hotel included facade restoration and updates, a new health spa, chiller and cooling tower replacements, electrical substation upgrades, air handling unit replacements, domestic water booster pump system improvements, water softeners, sprinkler system upgrades and kitchen renovations.



PARAGON CASINO & RESORT

MARKSVILLE, LA
WDG provided architecture and engineering services for a 20,000 square foot casino floor expansion of the Paragon Casino. Working in concert with the owner and selected contractor, WDG assisted in the successful completion of the fast-track project, which was constructed and opened in 14 weeks. Other projects for Paragon include the Legends Steakhouse, Golf Clubhouse and Cart Facility, and the Fire Pump and Water Tower Upgrade.





ROYAL SONESTA HOTEL

NEW ORLEANS, LA
WDG engineers provided mechanical, electrical, and plumbing engineering services for a new rooftop health spa at the Royal Sonesta Hotel. Design services included HVAC, plumbing, electrical power, lighting, and fire suppression and detection. Other projects at the Royal Sonesta include emergency power and water intrusion studies, chiller replacement, cooling tower replacement, and multiple air handling unit upgrades.

WINDSOR COURT HOTEL SPA

NEW ORLEANS, LA
WDG engineers provided mechanical, electrical, and plumbing engineering services for a conversion of existing rooms into a new 4,500 square foot health spa at the Windsor Court Hotel in New Orleans. Design services included HVAC, plumbing, electrical power, lighting, and fire suppression and detection. Other projects include air conditioning and ventilation system upgrades for the upper floor meeting rooms and the guest rooms.



RESTAURANT R'EVOLUTION

NEW ORLEANS, LA
WDG engineers provided mechanical, electrical and plumbing engineering design for the new Chef John Folse restaurant at the Royal Sonesta. Additionally, WDG provided engineering design for the ventilation system improvements and renovations to the main kitchen in the Desire Oyster Bar. Project also included the HVAC system for the restaurant's wine cellar which required strict temperature and humidity controls.





MERCEDES BENZ SUPERDOME - NFL STADIUM

NEW ORLEANS, LA
 WDG designed mechanical, electrical, plumbing systems and fire protection improvements for the 2009-2011 Superdome Enhancement Project. Work included renovation and expansion of the plaza concourse with additional concessions and toilet facilities, addition of two event floor level clubs, relocation of the press box to the upper level, and new suites where the press box was located. WDG utilized the Revit model of the Superdome to generate drawings for the project. Mechanical and electrical work included food service additions and modifications, HVAC modifications, addition/renovation of eighteen public restrooms (total fixture count approximately 350) to include high efficiency/low water consumption water closets, urinals, and lavatories, lighting upgrades, LED exterior lighting system design, and substation replacement. Code related improvements included modifications to facilities for ADA compliance, fire alarm system work, and sprinkler system work.



CHAMPIONS SQUARE STADIUM

NEW ORLEANS, LA
 WDG designed mechanical, electrical, and plumbing system improvements, including fire protection, for a 121,000 square foot outdoor festival venue, which opened in August of 2010 as a tribute to fans following the Saints Super Bowl win. WDG provided design solutions to convert the existing New Orleans Center building into an open-air assembly area. Infrastructure design included electrical and plumbing systems for the sound stage and various LED screens, concessions, and on-site permanent restroom facilities.



LOUISIANA STADIUM & EXPOSITION DISTRICT BASEBALL STADIUM (FORMERLY ZEPHYR FIELD)

NEW ORLEANS, LA
 WDG provided electrical engineering services for modifications and upgrades to the lighting and power systems at Zephyr Field. Other projects with Zephyr Stadium include plumbing and electrical engineering to provide utilities to ten temporary office trailers.



MONDO

NEW ORLEANS, LA

WDG provided full architectural and engineering design services for the build out of Mondo: a full-service restaurant, bar and kitchen/prep/storage area at the new Louis Armstrong International Airport. The design of this restaurant was carefully coordinated with that of other restaurants and spaces. The design was inclusive of engineering design and coordination for all systems connecting to main airport mechanical and electrical rooms. A new greasy waste system was designed and carefully coordinated with other airport stakeholders and the base builder to avoid high security areas and baggage handling systems as it tied into the new main grease traps for the terminal.



SHAKE SHACK

NEW ORLEANS, LA

WDG provided full architectural and engineering design services for the build out of Shake Shack: an in-line service counter restaurant and kitchen/prep/storage area at the new Louis Armstrong International Airport. Architectural services included overall design, project management and client meetings, meetings with airport officials, finishes selection and detailing, life safety/code review, and engineering coordination.

The design for Shake Shack also included a new exhaust hood, grease exhaust and make up air systems, and associated roof mounted exhaust fans.

FOOD COURT SEATING AREA

NEW ORLEANS, LA

WDG provided engineering design services and architectural support for the build out of the Food Court Seating Area at the new Louis Armstrong International Airport. Engineering services involved the design of all mechanical, electrical, plumbing and fire protection systems. Architectural support services included finishes and design presentation, permitting and bidding, construction administration, and overall project coordination. The design of the food court was carefully coordinated with that of Starbucks, Panda Express, Smoothie King, Shake Shack and Mondo, all of which WDG | Architects Engineers also provided design services for.



PANDA EXPRESS

NEW ORLEANS, LA

WDG provided engineering design services and architectural support for the build out of Panda Express at the new Louis Armstrong International Airport. Engineering services involved the design of all mechanical, electrical, plumbing and fire protection systems. Architectural support services included finishes and design presentation, permitting and bidding, construction administration, and overall project coordination.





AUNTIE ANNE'S

NEW ORLEANS, LA

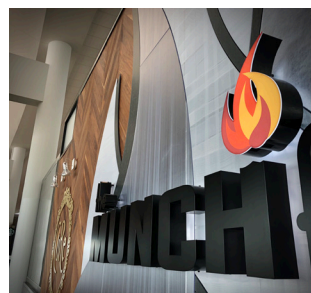
WDG provided engineering design services and architectural support for the build out of a new Auntie Anne's service kiosk at the new Louis Armstrong International Airport. Engineering services involved the design of all mechanical, electrical, plumbing and fire protection systems. Architectural support services included finishes and design presentation, permitting and bidding, construction administration, and overall project coordination.

CHILI'S

NEW ORLEANS, LA

WDG provided engineering design services and architectural support for the build out of Chili's restaurant dining area and bar, kitchen and Grab n' Go service kiosk at the new Louis Armstrong International Airport. Engineering services involved the design of all mechanical, electrical, plumbing and fire protection systems. Architectural support services included finishes and design presentation, permitting and bidding, construction administration, and overall project coordination.

The design of this restaurant was carefully coordinated with that of the other food and beverage spaces on Concourse C, all of which WDG | Architects Engineers also provided design services for. Designs for all of the spaces was inclusive of engineering design and coordination for all systems connecting to main airport mechanical and electrical rooms.



CURE / THE MUNCH FACTORY

NEW ORLEANS, LA

WDG provided full architectural and engineering design services for the build out of two iconic brands: Cure and The Munch Factory. Here they are combined as a hybrid concept in Concourse C at the new Louis Armstrong International Airport. Cure's focus is serving award-winning cocktails in a lounge environment, while The Munch Factory casually reimagines local Creole cuisine with contemporary twists. While being distinct architectural and culinary experiences, both spaces share a full-service kitchen, food prep and storage area.





EMERIL'S TABLE

NEW ORLEANS, LA

WDG provided full architectural and engineering design services for the build out of Emeril's Table: a restaurant, bar, dining area, kitchen and Grab n' Go service counter at the new Louis Armstrong International Airport. Architectural services included project management and client meetings, meetings with airport officials, finishes selection and detailing, life safety/code review, and engineering coordination. Engineering services involved the design of all mechanical, electrical, plumbing and fire protection systems. Architectural support services included finishes and design presentation, permitting and bidding, construction administration, and overall project coordination.

The design of this restaurant was carefully coordinated with that of Great American Bagel, Starbucks, and Lower Level Storage and Admin Space for HMSHost, all of which WDG | Architects Engineers also provided design services for. Designs for all of the spaces was inclusive of engineering design and coordination for all systems connecting to main airport mechanical and electrical rooms. A new greasy waste system was designed and carefully coordinated with other airport stakeholders and the base builder. The design for Emeril's Table also included a new exhaust hood, grease exhaust and make up air ducts, and associated roof mounted exhaust fans.

STARBUCKS

NEW ORLEANS, LA

WDG provided engineering design services and architectural support for the build out of three new Starbucks coffee shops at the new Louis Armstrong International Airport. The respective locations are: Main Terminal West Head of House (bottom right); Concourse C (below, top left image); and Concourse B (bottom left image).

All three locations involved complete new construction of all systems from the structural slab up, including walls, partitions, mechanical and electrical systems, and all finishes, fixtures and equipment.



SMOOTHIE KING

NEW ORLEANS, LA

KILLEEN, TX

BIRMINGHAM, AL

WDG provided engineering design services for the build out of three Smoothie King locations: Killeen, Texas; Birmingham, Alabama; and New Orleans, Louisiana.

For the New Orleans location, WDG provided engineering design services and architectural support for the build out of Smoothie King at the new Louis Armstrong International Airport. Engineering services involved the design of all mechanical, electrical, plumbing and fire protection systems. Architectural support services included finishes and design presentation, permitting and bidding, construction administration, and overall project coordination.



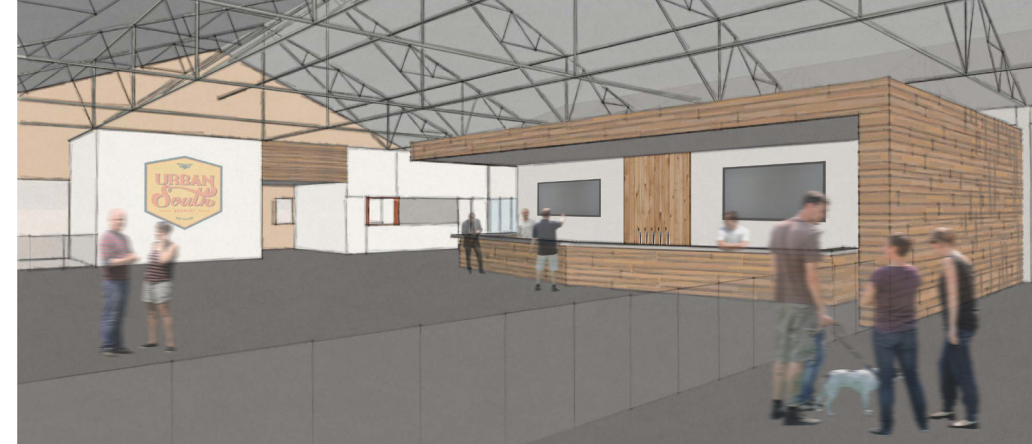


PARLEAUX BEER LAB

NEW ORLEANS, LA
WDG provided architecture and mechanical, electrical, plumbing engineering design services for the renovation and build-out of a craft brewery and taproom located in New Orleans' Bywater neighborhood.

COURTYARD BREWERY

NEW ORLEANS, LA
WDG provided mechanical, electrical, plumbing engineering design services for the renovation and build-out of a craft brewery and taproom located in New Orleans' Mid-City neighborhood.



URBAN SOUTH BREWERY

NEW ORLEANS, LA
WDG provided architectural and mechanical, electrical and plumbing engineering design services for the development of a new brewery and tap room located in an existing warehouse space in New Orleans. The tap room is open to the public and includes a bar and seating area with views into the brewing facilities.

SECOND LINE BREWERY

NEW ORLEANS, LA
WDG provided mechanical, electrical, and plumbing engineering for the renovation of an existing 12,500 square foot building in Mid City. The design for Second Line Brewery included brewing and canning spaces, office spaces, and storage spaces. WDG is currently evaluating the facility for the addition of a tap room.

MIEL BREWERY & TAPROOM

NEW ORLEANS, LA
WDG provided mechanical, electrical, plumbing engineering design services for the renovation and build-out of a craft brewery and taproom located in New Orleans' Irish Channel neighborhood.

CAJUN FIRE BREWING CO.

NEW ORLEANS, LA
WDG provided full architecture and mechanical, electrical, plumbing engineering design services for the development of a new brewery, taproom and event hall building located in New Orleans East.



clients & brands

HOTELS & CASINOS

Avenue Plaza Resort
The Ben Louis (formerly Sweets Inn Motel)
Escapes! To the Shores
Hotel Monteleone
Sonder at 300 S. Rampart
Sonesta International Hotels Corporation
Tunica-Biloxi Gaming Commission
Windsor Court Hotel

SPORTS VENUES/RECREATION

The Louisiana Stadium & Exposition District:
- Superdome
- Champions Square
- The Shrine On Airline (Zephyr Field)
New Orleans Country Club Maintenance Facility
Rosenwald Center Multi-use Community Complex
Zelia, LLC/SMG

RETAIL

CVS/South Market District
Diamondhead Shopping Center
Dollar Tree
Gulf Coast Bank
Hourblast
Robert Fresh Market

RESTAURANTS & BARS

ACME Oyster	Hardee's
AKZ, LLC	Landry's Seafood House
Arnaud's Restaurant	Maple Street Patisserie
Artz Bagelz	Mondo
Auntie Anne's	Panda Express
Carousel Bar	Restaurant R'evolution
City Greens	Shake Shack
Chili's	Smoothie King
Cure	Starbucks
District Donuts	The Club at MSY
Drago's	The Munch Factory
Emeril's Table	Wendy's
Great American Bagel	Wood Fired Bistro

AVIATION / TRANSPORTATION

Airport Dimensions (Airport Lounge Development)	HMSHost (Host International)
--	---------------------------------

BREWERIES & DISTILLERIES

Cajun Fire Brewing Company	Roulaison Distilling Company
Courtyard Brewery	Second Line Brewery
Miel Brewery	Urban South Brewery
Parleaux Beer Lab	

services

ARCHITECTURE, PLANNING & MANAGEMENT

Feasibility Studies Building Assessments Master Planning Site Planning Zoning Studies Programming Space Planning Brand/Operator Coordination Food Service Coordination Signage Coordination & Design Low Voltage Vendor Coordination: - POS systems - Audio/Video systems - Wifi/Charging stations Permit Expediting	Hotel Design Restaurant & Bar Design Kitchen/BOH Design Brewery/Tap Room Design New Construction Building Renovations Tenant Fit Outs Interior Design Lighting Design Facade Restoration Building Restoration Adaptive Reuse Site & Landscape Design Engineering Coordination: - Structural/Civil - MEP
--	--

ENGINEERING

HVAC Design
- Chilled Water Systems
- Steam Systems
- Environmental Control Systems
- Grease Exhaust Systems

Electrical Design
- Lighting & Power Systems
- Low Voltage/Data/IT
- Fire Alarm/Emergency Systems
- Standby Generation Systems

Plumbing Design
- Domestic/Sanitary/Wastewater
- Water Treatment Systems
- Greasy Waste Systems
- Fire Suppression Systems

Commissioning (Cx)
Retro-Commissioning





WDG | ARCHITECTS ENGINEERS

821 BARONNE ST
NEW ORLEANS, LA 70113
(504) 754-5280
www.wdgnola.com

WDG is certified by the City of New Orleans
as a State and Local Disadvantaged Business
Enterprise (DBE) and by the State of Louisiana as
a Small Entrepreneurship (Hudson/SE vendor).

For further information about WDG's work, please visit www.wdgnola.com
or check us out on social media

