



# HOSPITALITY & ENTERTAINMENT

HOTELS, SPORTS VENUES, RESTAURANTS & BREWERIES

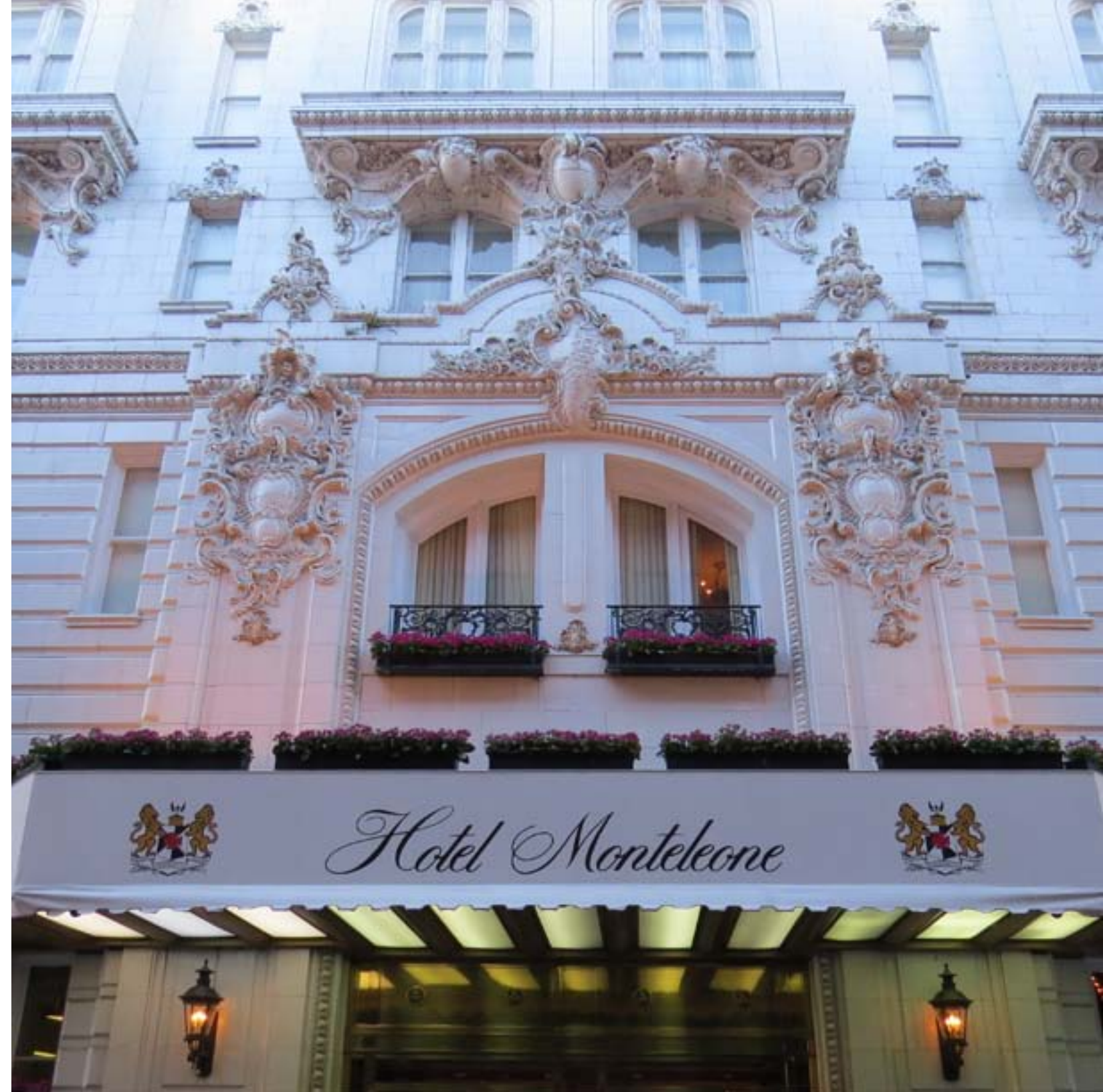
WDG | ARCHITECTS ENGINEERS



Since our founding WDG | Architects Engineers has been providing architectural, interior design and engineering services for clients in the hospitality and entertainment industry. Our team of professionals regularly work on new construction, renovations, and historic structures throughout the Greater New Orleans area & beyond. We work with owners to plan for growth and to help forecast industry trends and best practices.

# hotels, sports venues, restaurants & breweries

Additionally, our team of engineers and commissioning agents work with both building owners and facility managers to provide solutions for optimal systems performance. We have experts on staff who regularly provide LEED fundamental and/or enhanced commissioning services to owners and architects for new facilities, and provide retro-commissioning services for structures already in operation. Our team helps buildings run as efficiently as they were intended.







## HOTEL MONTELEONE

NEW ORLEANS, LA  
WDG provided architecture and engineering services for a \$40,000,000 renovation of the Hotel Monteleone in the French Quarter over a four year period.

The mechanical, plumbing, electrical and fire protection and suppression systems were replaced, brought up to current codes, and the latest energy saving technology was employed to optimize facility operation while providing individual room temperature control. Custom energy recovery ventilators were installed to exchange energy between the outside air and exhaust systems while improving pressurization throughout the hotel. The temperature control system was integrated with the hotel reservation system to maximize energy savings while providing optimum comfort to the guests.

WDG's work included renovations of the lobby, ballroom and famed Carousel Bar. Other projects at the hotel included facade restoration and updates, a new health spa, chiller and cooling tower replacements, electrical substation upgrades, air handling unit replacements, domestic water booster pump system improvements, water softeners, sprinkler system upgrades and kitchen renovations.



## PARAGON CASINO & RESORT

MARKSVILLE, LA  
WDG provided architecture and engineering services for a 20,000 square foot casino floor expansion of the Paragon Casino. Working in concert with the owner and selected contractor, WDG assisted in the successful completion of the fast-track project, which was constructed and opened in 14 weeks. Other projects for Paragon include the Legends Steakhouse, Golf Clubhouse and Cart Facility, and the Fire Pump and Water Tower Upgrade.







### ROYAL SONESTA HOTEL

NEW ORLEANS, LA  
WDG engineers provided mechanical, electrical, and plumbing engineering services for a new rooftop health spa at the Royal Sonesta Hotel. Design services included HVAC, plumbing, electrical power, lighting, and fire suppression and detection. Other projects at the Royal Sonesta include emergency power and water intrusion studies, chiller replacement, cooling tower replacement, and multiple air handling unit upgrades.

### WINDSOR COURT HOTEL SPA

NEW ORLEANS, LA  
WDG engineers provided mechanical, electrical, and plumbing engineering services for a conversion of existing rooms into a new 4,500 square foot health spa at the Windsor Court Hotel in New Orleans. Design services included HVAC, plumbing, electrical power, lighting, and fire suppression and detection. Other projects include air conditioning and ventilation system upgrades for the upper floor meeting rooms and the guest rooms.



### RESTAURANT R'EVOLUTION

NEW ORLEANS, LA  
WDG engineers provided mechanical, electrical and plumbing engineering design for the new Chef John Folse restaurant at the Royal Sonesta. Additionally, WDG provided engineering design for the ventilation system improvements and renovations to the main kitchen in the Desire Oyster Bar. Project also included the HVAC system for the restaurant's wine cellar which required strict temperature and humidity controls.







### MERCEDES BENZ SUPERDOME - NFL STADIUM

NEW ORLEANS, LA  
 WDG designed mechanical, electrical, plumbing systems and fire protection improvements for the 2009-2011 Superdome Enhancement Project. Work included renovation and expansion of the plaza concourse with additional concessions and toilet facilities, addition of two event floor level clubs, relocation of the press box to the upper level, and new suites where the press box was located. WDG utilized the Revit model of the Superdome to generate drawings for the project. Mechanical and electrical work included food service additions and modifications, HVAC modifications, addition/renovation of eighteen public restrooms (total fixture count approximately 350) to include high efficiency/low water consumption water closets, urinals, and lavatories, lighting upgrades, LED exterior lighting system design, and substation replacement. Code related improvements included modifications to facilities for ADA compliance, fire alarm system work, and sprinkler system work.



### CHAMPIONS SQUARE STADIUM

NEW ORLEANS, LA  
 WDG designed mechanical, electrical, and plumbing system improvements, including fire protection, for a 121,000 square foot outdoor festival venue, which opened in August of 2010 as a tribute to fans following the Saints Super Bowl win. WDG provided design solutions to convert the existing New Orleans Center building into an open-air assembly area. Infrastructure design included electrical and plumbing systems for the sound stage and various LED screens, concessions, and on-site permanent restroom facilities.



### ZEPHYR FIELD BASEBALL STADIUM

NEW ORLEANS, LA  
 WDG provided electrical engineering services for modifications and upgrades to the lighting and power systems at Zephyr Field. Other projects with Zephyr Stadium include plumbing and electrical engineering to provide utilities to ten temporary office trailers.



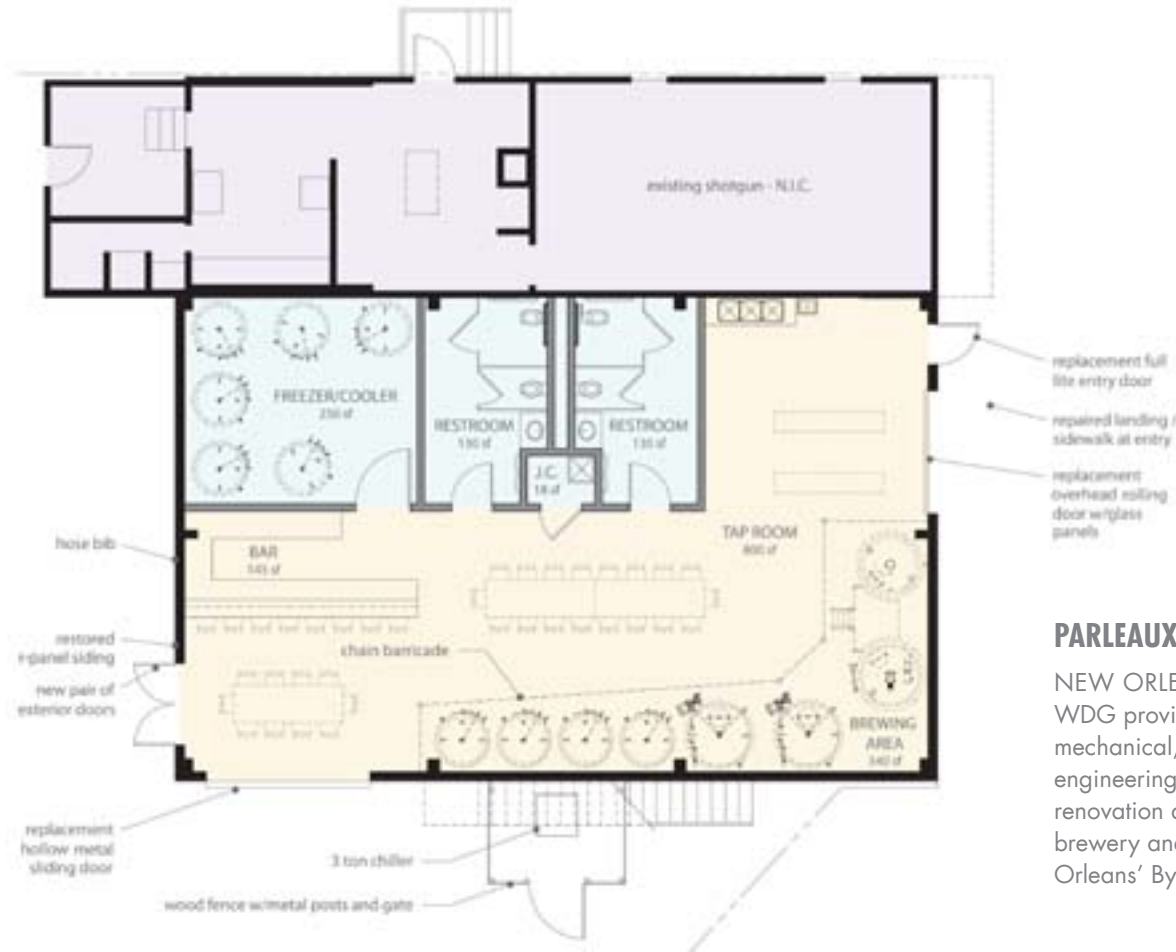
URBAN SOUTH BREWERY

NEW ORLEANS, LA  
WDG provided architectural and mechanical, electrical and plumbing engineering design services for the development of a new brewery and tap room located in an existing warehouse space in New Orleans. The tap room is open to the public and includes a bar and seating area with views into the brewing facilities. Additional features include a walk-in cooler, restrooms, brewing and warehouse space, finishes, fixtures and partition. Infrastructure upgrades include new mechanical and utility rooms, an ADA-compliant front door ramp, lighting, power, HVAC and plumbing design.



SECOND LINE BREWERY

NEW ORLEANS, LA  
WDG provided mechanical, electrical, and plumbing engineering for the renovation of an existing 12,500 square foot building in Mid City. The design for Second Line Brewery included brewing and canning spaces, office spaces, and storage spaces. WDG is currently evaluating the facility for the addition of a tap room.



PARLEAUX BEER LAB

NEW ORLEANS, LA  
WDG provided architecture and mechanical, electrical, plumbing engineering design services for the renovation and build-out of a craft brewery and taproom located in New Orleans' Bywater neighborhood.







### ARTZ BAGELS

NEW ORLEANS, LA  
WDG provided architectural, interior design, mechanical, electrical, and plumbing engineering design for the historic renovation of Artz Bagelz located on Baronne Street. The scope of the 685 square foot building included a kitchen prep area, counter, storage, and restaurant seating area. The café also features original historic elements.

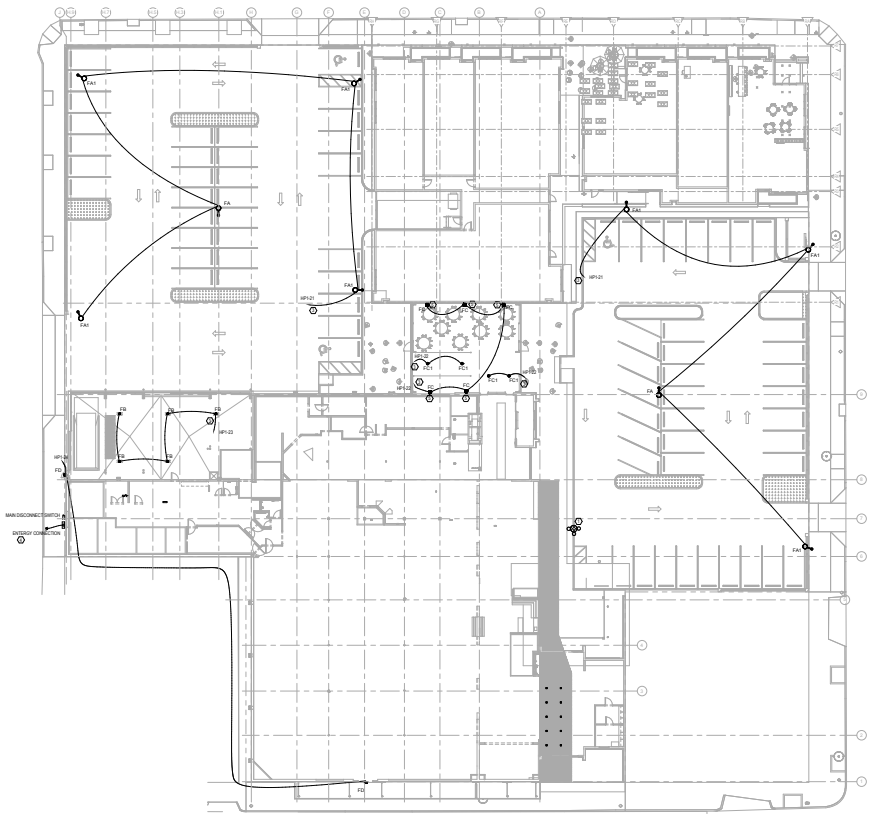


### CITY GREENS

NEW ORLEANS, LA  
WDG engineers provided mechanical, electrical, plumbing, and fire protection engineering design for a new salad specialty restaurant in an existing high-rise building in the New Orleans Central Business District. Work included relocation of existing facilities, monitoring of energy usage and customized lighting design.

### ROBÉRT FRESH MARKET

NEW ORLEANS, LA  
WDG provided mechanical, electrical, plumbing, and fire protection design services for the conversion of an existing, unoccupied grocery store located on St. Claude Avenue into a new Robért's Fresh Market grocery store. The project consists of approximately 34,800 square feet of parking space and 38,600 square feet of product display, offices, mechanical roof areas, and back of house areas.



### HOURLBLAST

NEW ORLEANS, LA  
Hourblast is a 1,000 SF interior build-out of a retail storefront space at 821 Baronne Street, located in the booming Warehouse District of downtown New Orleans. The project scope involved the architectural and engineering design of open workout space, locker and shower areas, and office and storage spaces. In addition to maximizing use in an otherwise small tenant space, acoustics and acoustical design figured prominently into the design scope for this client, as loud music and vocal instructions are an inherent part of the workout program. The project was completed in 2016.





# clients

## HOTELS & CASINOS

Hotel Monteleone  
Sonesta International Hotels Corporation  
Tunica-Biloxi Gaming Commission  
Windsor Court Hotel

## SPORTS VENUES/RECREATION

The Louisiana Stadium & Exposition District  
New Orleans Country Club Maintenance Facility  
Rosenwal Center Multi-use Community Complex  
Zelia, LLC/SMG

## RETAIL

CVS/South Market District  
Diamondhead Shopping Center  
District Donuts  
Dollar Tree  
Gulf Coast Bank  
Hourblast  
Robert Fresh Market  
Smoothie King

## RESTAURANTS, BARS & BREWERIES

ACME Oyster  
Arnaud's Restaurant  
AKZ, LLC  
Carousel Bar  
City Greens  
Drago's  
Hardee's  
Maple Street Patisserie  
Parleaux Beer Lab  
Restaurant R'evolution  
Second Line Brewery  
Urban South Brewery  
Wendy's  
Wood Fired Bistro

# services

## ARCHITECTURE

Planning  
New Construction  
Building Renovations  
Interior Design  
Space Planning  
Facade Restoration  
Building Restoration  
Adaptive Reuse  
Feasibility Studies  
Brewery/Tap Room Design

## ENGINEERING

Chilled Water Systems  
Steam Systems  
Environmental Control Systems  
Water Treatment Systems  
Wastewater Treatment Systems  
Standby Generation Systems  
Lighting Systems







WDG | ARCHITECTS ENGINEERS

821 BARONNE ST  
NEW ORLEANS, LA 70113  
(504) 754-5280  
[www.wdgnola.com](http://www.wdgnola.com)

WDG is certified by the City of New Orleans as a State and Local Disadvantaged Business Enterprise (DBE) and by the State of Louisiana as a Small Entrepreneurship (Hudson/SE vendor). The firm is licensed in Louisiana, Mississippi, Texas, Tennessee, Florida and Arkansas.

For further information about WDG's work, please visit [www.wdgnola.com](http://www.wdgnola.com)  
or check us out on social media

